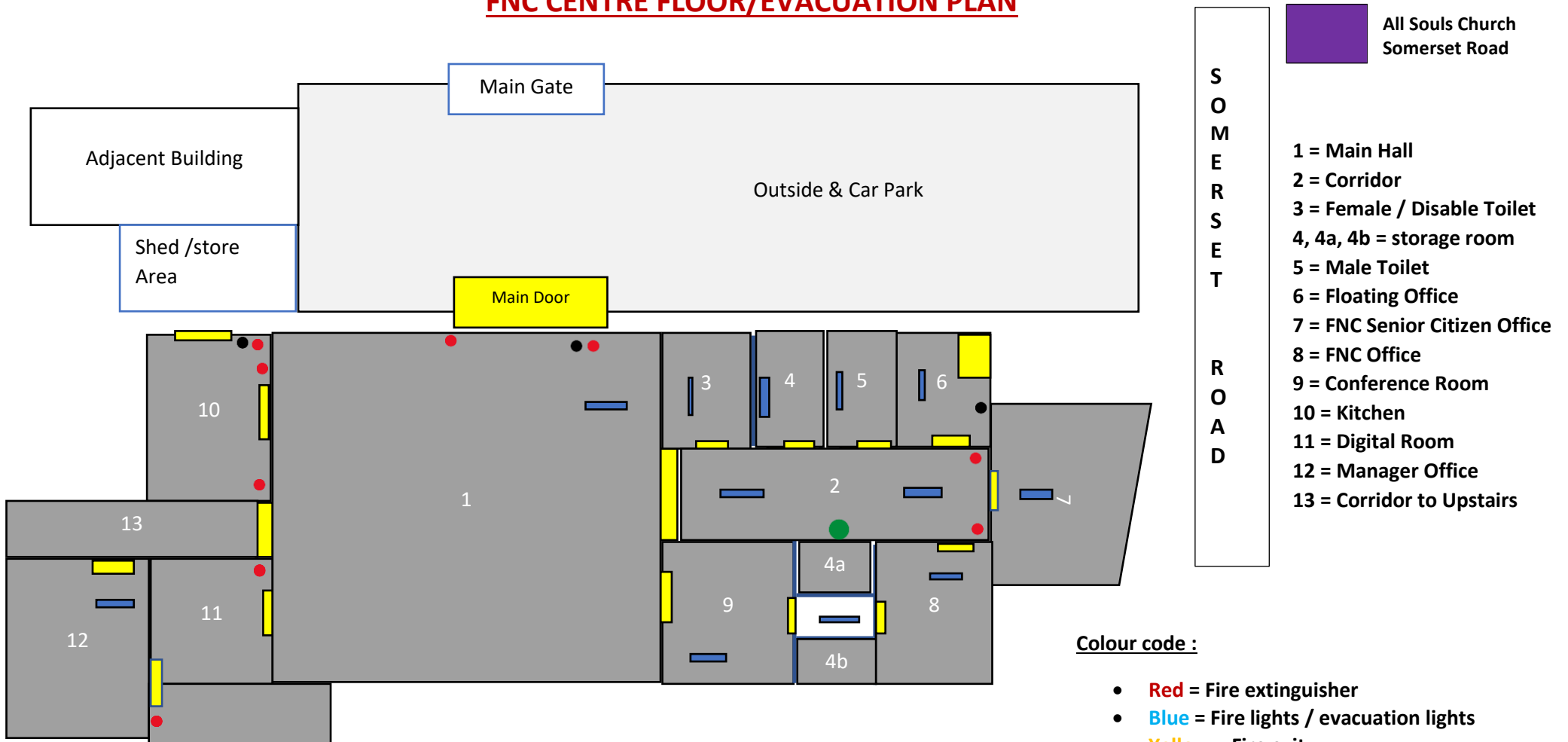


FNC CENTRE FLOOR/EVACUATION PLAN



**S
O
M
E
R
S
E
T

R
O
A
D**

**All Souls Church
Somerset Road**

- 1 = Main Hall**
- 2 = Corridor**
- 3 = Female / Disable Toilet**
- 4, 4a, 4b = storage room**
- 5 = Male Toilet**
- 6 = Floating Office**
- 7 = FNC Senior Citizen Office**
- 8 = FNC Office**
- 9 = Conference Room**
- 10 = Kitchen**
- 11 = Digital Room**
- 12 = Manager Office**
- 13 = Corridor to Upstairs**

Colour code :

- **Red** = Fire extinguisher
- **Blue** = Fire lights / evacuation lights
- **Yellow** = Fire exit
- **Green** = First Aid Station
- **Black** = Alarm break point
- **Purple** = Outside Fire assembly point